

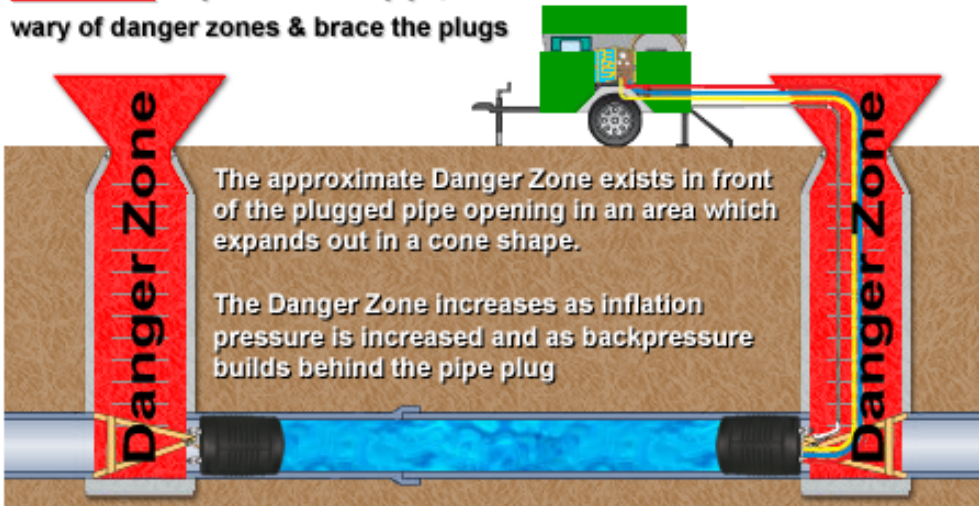
# Kevlar® Reinforced \*NR-SBR Rubber Pipe Plugs: (1.6" up to 60" )

These plugs are molded of special NR-SBR rubber, reinforced with Kevlar® tire cording.

\*NR = Isoprene rubber, natural. \*SBR = Styrene-butadiene rubber

All plugs are test-designed at three times their working pressure (required inflation pressure) ensure durability and safety. Due to their light weight and short length, Sava plugs are easy to handle even in large diameter sizes. All plugs are equipped with quick-connect couplings and nipples. [Oil resistant multi-size plugs](#) are also available from 1.6" to 60" ranges.

**Remember:** Inspect/clean the pipe, be wary of danger zones & brace the plugs



## Protective Sleeves

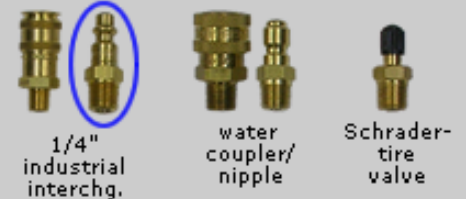


Protective Sleeves Available for plug sizes:

8" - 16"  
 14" - 24"  
 15" - 30"  
 20" - 40"  
 24" - 48"  
 30" - 60"

3/16" thickness  
 (1/4" thick)

All plugs ship with industrial interchange quick connect 1/4" nipple unless specified - please note other available fittings shown:



## Plug Pipe Plugs with 36 PSI Operating Pressure:

Most plugs fitted with 1/4" inflation nipple (unless specified)



**Specs for 36 PSI plugs shown above**

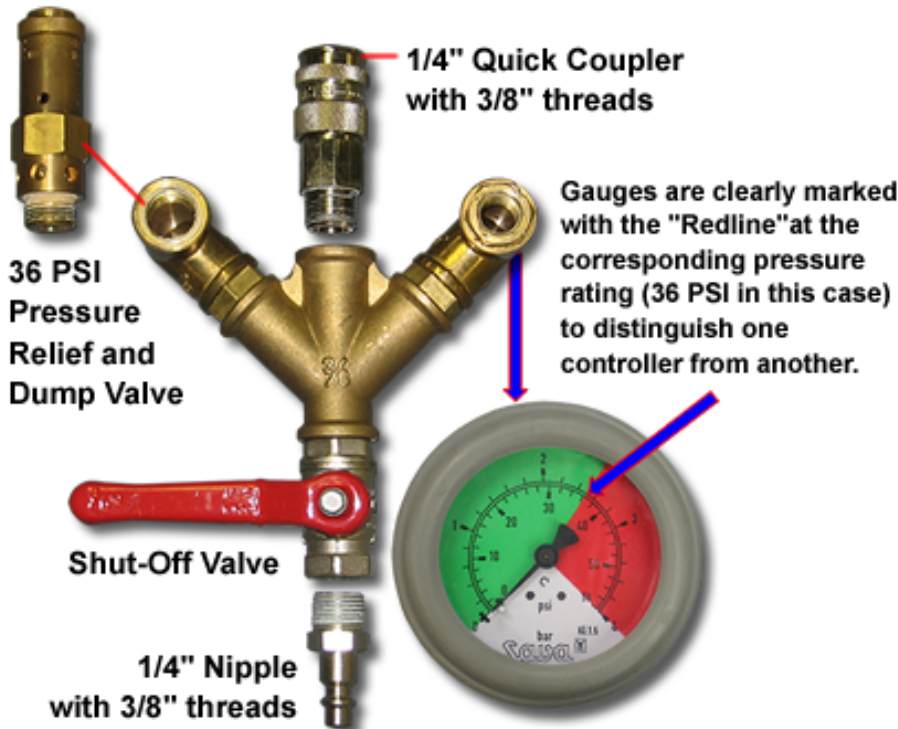
**(SAE SIZES) LARGE MULTI SIZE PNEUMATIC BLOCKING PIPE PLUGS (Plugsy)**

| SAE ITEM # | PLUGGY TYPE | ID PIPE DIAMETER |      | PLUG SPECS (DEFLATED) |        |                | EYE BOLT SIZE | INFLATION PRESSURE |        |
|------------|-------------|------------------|------|-----------------------|--------|----------------|---------------|--------------------|--------|
|            |             | MIN              | MAX  | DIAMETER              | LENGTH | PRODUCT WEIGHT |               | REQUIRED           | VALVE  |
|            |             | INCH             | INCH | INCH                  | INCH   | INCH           |               | lbs                | PSI    |
| 519423     | 1.6"-2.8"   | 1.6"             | 2.8" | 1.4"                  | 7.8"   | 0.7 lbs        | 6mm           | 36 PSI             | R 1/4" |
| 519424     | 2.8"-6"     | 2.8"             | 6"   | 2.7"                  | 13.4"  | 1.3 lbs        | 6mm           | 36 PSI             | R 1/4" |
| 60417      | 4"-8"       | 3-5/8"           | 8"   | 3.6"                  | 21.1"  | 2.47 lbs       | 6mm           | 36 PSI             | R 1/4" |
| 60418      | 6"-12"      | 5-5/8"           | 12"  | 5.6"                  | 22.6"  | 4.19 lbs       | 8mm           | 36 PSI             | R 1/4" |
| 60419      | 8"-16"      | 7-1/2"           | 16"  | 7.6"                  | 25"    | 6.5 lbs        | 8mm           | 36 PSI             | R 1/4" |
| 60599      | 12"-21"     | 10-3/4"          | 21"  | 10.7"                 | 26.6"  | 13.23 lbs      | 8mm           | 36 PSI             | R 1/4" |
| 60422      | 14"-24"     | 13"              | 24"  | 12.7"                 | 34.1"  | 18.5 lbs       | 10mm          | 36 PSI             | R 1/4" |
| 60606      | 15"-30"     | 14"              | 30"  | 13.5"                 | 42.7"  | 24.03 lbs      | 10mm          | 36 PSI             | R 1/4" |

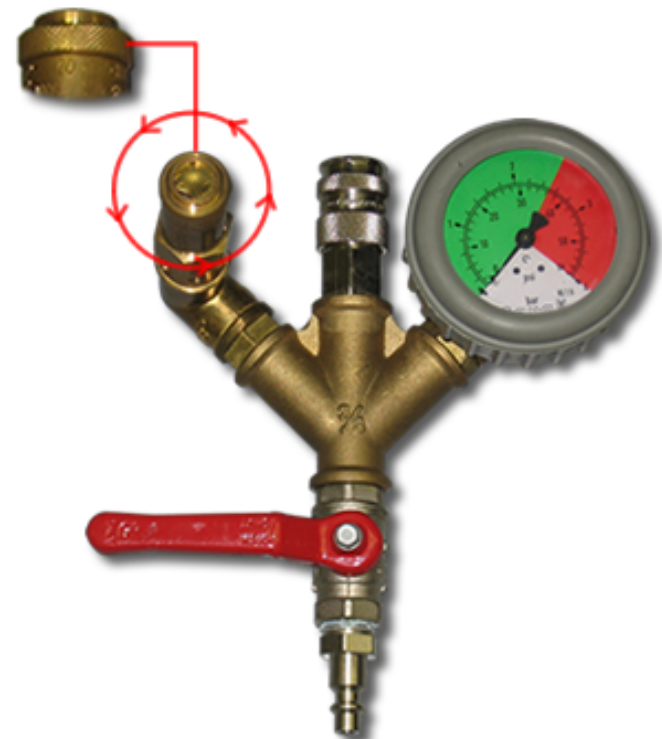
**Maximum allowable backpressure - Back pressure measured in dry iron pipe (PSI).**

| Plugsy - Plugsy Size | SAE Pipe Diameter (inch) |       |       |       |       |       |       |       |       |       |       |     |     |     |     |     |     |  |
|----------------------|--------------------------|-------|-------|-------|-------|-------|-------|-------|-------|-------|-------|-----|-----|-----|-----|-----|-----|--|
|                      | 1.6"                     | 2.8"  | 4"    | 6"    | 8"    | 10"   | 12"   | 14"   | 16"   | 20"   | 24"   | 32" | 40" | 48" | 52" | 56" | 60" |  |
| 1.6" - 2.8"          | 28.8                     | 17.28 |       |       |       |       |       |       |       |       |       |     |     |     |     |     |     |  |
| 2.8" - 6"            |                          | 31.91 | 24.66 | 18.85 |       |       |       |       |       |       |       |     |     |     |     |     |     |  |
| 4" - 8"              |                          |       | 31.91 | 24.66 | 18.85 |       |       |       |       |       |       |     |     |     |     |     |     |  |
| 6" - 12"             |                          |       |       | 31.91 | 29.01 | 20.30 | 17.40 |       |       |       |       |     |     |     |     |     |     |  |
| 8" - 16"             |                          |       |       |       | 31.91 | 29.01 | 24.66 | 21.75 | 17.40 |       |       |     |     |     |     |     |     |  |
| 12" - 21"            |                          |       |       |       |       |       | 29.01 | 24.66 | 21.75 | 17.40 |       |     |     |     |     |     |     |  |
| 14" - 24"            |                          |       |       |       |       |       |       | 30.46 | 27.56 | 23.20 | 18.85 |     |     |     |     |     |     |  |
| 15" - 30"            |                          |       |       |       |       |       |       |       | 29.01 | 27.56 | 20.30 |     |     |     |     |     |     |  |

**All Sava plugs have a corresponding controller (Sold separately) to match the inflation pressure on the plug in order to prevent over-inflation damage to the plug. (Required for warrantee claims)**



Rotate the knurled nut on top of the pressure relief valve counter-clockwise to release the pressure from the plugs that are in the line





36 PSI  
Controller  
(#60310)

Use part# 60310 (36 PSI Controller)  
with the following plugs:

- #60417 (4" - 8")
- #60418 (6" - 12")
- #60419 (8" - 16")
- #60599 (12" - 21")
- #60422 (14" - 24")
- #60606 (15" - 30")

Inflation Controller Protects equipment from over inflation damage and controls pressure with accurate gauge (required use for warranty claims). Nickel plated brass 1/4" quick-connect couplings with stainless steel bearings for long life. Liquid filled stainless steel gauge. Stainless gas ball valve. Precision machined brass safety relief over pressure relief valve eliminates over-inflation hazards; **available in 15, 22, and 36 PSI. 60 PSI output pressure gauge.**

Maximum input pressure 120PSI recommended. For higher input pressures please request custom controller configurations. Custom controllers and gauges are also available.

### Plug Pipe Plugs with 22 PSI Operating Pressure:

20-40" Plug fitted with  
1/4" inflation nipple



20-40" Plug

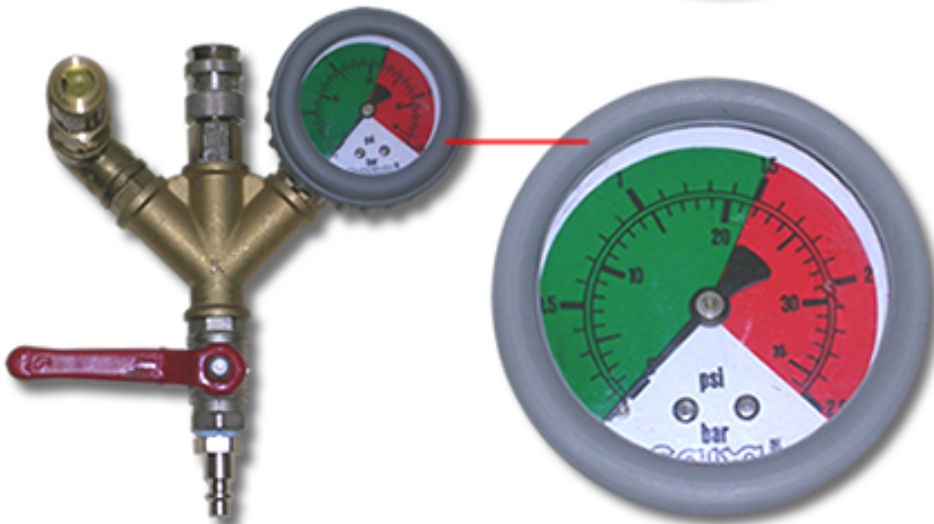
24-48" Plug

3/8" hex plug

1/4" nipple with  
3/8" threads



24-48" Plug fitted with two 3/8" threaded inflation ports (shown here with 1/4" inflation nipple and hex plug). Extra inflation fittings can be added or substituted



Corresponding controller  
for this plug:  
22 PSI Controller (#74609)

Use part# 74609 (22 PSI Controller)  
with the following plugs:

- #60425 (20" - 40")
- #523941 (24" - 48")

**Specs for 22 PSI plugs shown above**

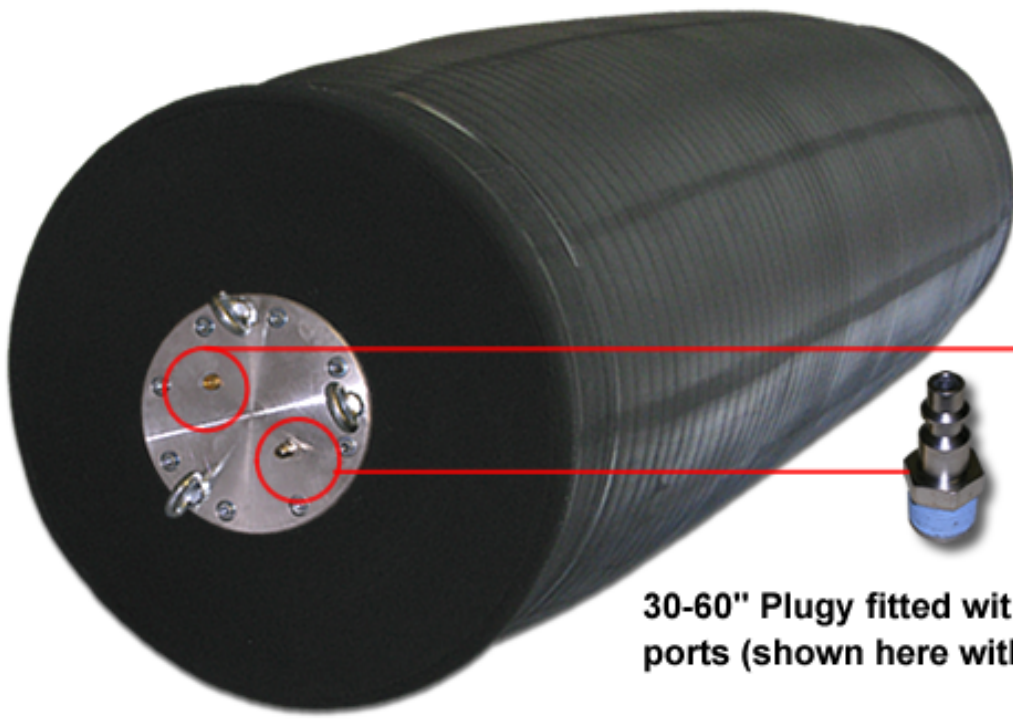
**(SAE SIZES) LARGE MULTI SIZE PNEUMATIC BLOCKING PIPE PLUGS (Plugy)**

| SAE ITEM # | PLUGY TYPE INCH | ID PIPE DIAMETER |          | PLUG SPECS (DEFLATED) |             |                    | EYE BOLT SIZE mm | INFLATION PRESSURE |            |
|------------|-----------------|------------------|----------|-----------------------|-------------|--------------------|------------------|--------------------|------------|
|            |                 | MIN INCH         | MAX INCH | DIAMETER INCH         | LENGTH INCH | PRODUCT WEIGHT lbs |                  | REQUIRED PSI       | VALVE TYPE |
|            |                 |                  |          |                       |             |                    |                  |                    |            |
| 60425      | 20"-40"         | 19"              | 40"      | 18.6"                 | 46.7"       | 38.18 lbs          | 10mm             | 21.6PSI            | R 1/4"     |
| 523941     | 24"-48"         | 23"              | 48"      | 22.6"                 | 59"         | 82.5 lbs           | 10mm             | 21.6PSI            | R1/4"      |

**Maximum allowable backpressure - Back pressure measured in dry iron pipe (PSI).**

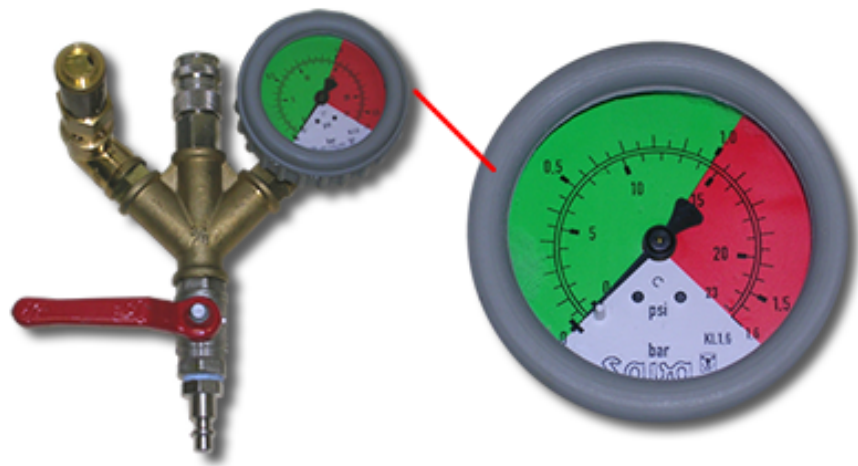
| Plugy - Plugy Size | SAE Pipe Diameter (inch) |      |    |    |    |     |     |     |     |       |       |       |      |      |     |     |     |
|--------------------|--------------------------|------|----|----|----|-----|-----|-----|-----|-------|-------|-------|------|------|-----|-----|-----|
|                    | 1.6"                     | 2.8" | 4" | 6" | 8" | 10" | 12" | 14" | 16" | 20"   | 24"   | 32"   | 40"  | 48"  | 52" | 56" | 60" |
| 20"- 40"           |                          |      |    |    |    |     |     |     |     | 14.50 | 11.60 | 8.70  | 7.25 |      |     |     |     |
| 24"- 48"           |                          |      |    |    |    |     |     |     |     |       | 14.50 | 10.15 | 8.70 | 7.25 |     |     |     |

**Plugy Pipe Plugs with 15 PSI Operating Pressure:**



**Part# 78959:  
30-60" Plugy**

**30-60" Plugy fitted with two 1/4" threaded inflation ports (shown here with 1/4" nipple & 1/4" hex plug).**



**Corresponding controller for this plug:  
15 PSI Controller (#74653)**

**Use part# 74653 (15 PSI Controller) with the following plug:  
#78959 (30" - 60")**

## Specs for 15 PSI plug shown above

### (SAE SIZES) LARGE MULTI SIZE PNEUMATIC BLOCKING PIPE PLUGS (Plugsy)

| SAE ITEM # | PLUGY TYPE | ID PIPE DIAMETER |      | PLUG SPECS (DEFLATED) |        |                | EYE BOLT SIZE | INFLATION PRESSURE |        |
|------------|------------|------------------|------|-----------------------|--------|----------------|---------------|--------------------|--------|
|            |            | MIN              | MAX  | DIAMETER              | LENGTH | PRODUCT WEIGHT |               | REQUIRED           | VALVE  |
|            | INCH       | INCH             | INCH | INCH                  | INCH   |                | mm            | PSI                | TYPE   |
| 78959      | 30"-60"    | 25"              | 60"  | 23.6"                 | 90.6"  | 147.71 lbs     | 10mm          | 14.5PSI            | R 1/4" |

Maximum allowable backpressure - Back pressure measured in dry iron pipe (PSI).

| Plugsy - Plugsy Size | SAE Pipe Diameter (inch) |      |    |    |    |     |     |     |     |     |     |       |       |       |      |      |      |
|----------------------|--------------------------|------|----|----|----|-----|-----|-----|-----|-----|-----|-------|-------|-------|------|------|------|
|                      | 1.6"                     | 2.8" | 4" | 6" | 8" | 10" | 12" | 14" | 16" | 20" | 24" | 32"   | 40"   | 48"   | 52"  | 56"  | 60"  |
| 30" - 60"            |                          |      |    |    |    |     |     |     |     |     |     | 14.50 | 13.05 | 10.15 | 8.70 | 7.25 | 5.80 |

### Available accessories for these products:



#60422: 14 - 24" plug shown here with 1/4" male nipple & remote placement adapter

#### Remote Placement Adapters

| Part # | Description                           | Weight |
|--------|---------------------------------------|--------|
| 503403 | Fits 4"-8" Plugsy                     | 2 Lbs  |
| 503404 | Fits 6"-12" / 8"-16" / 12"-21" Plugsy | 2 Lbs  |
| 503407 | Fits 14"-24" / 15"-30" Plugsy         | 5 Lbs  |
| 130-6  | 8'-20' Telescope pole (aluminum)      | 5 Lbs  |

#### Protective Sleeves

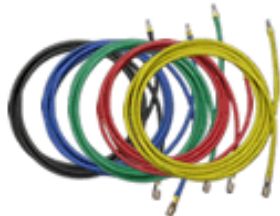


Protective Sleeves Available for plug sizes:

- 8" - 16"
- 14" - 24"
- 15" - 30"
- 20" - 40"
- 24" - 48"
- 30" - 60"

↑ 3/16" thickness  
↓ (1/4" thick)

#### Inflation Hoses



SAE

3/8"ID all-weather inflation hoses. Weather stability from -40F to +212F, also resistant to oil & fuel degradation & remains flexible in low temperatures. Fiber reinforcement braid insures minimum burst pressure of 1,000 PSI.

| Item#    | Length | Fittings | Color  |
|----------|--------|----------|--------|
| 77682S16 | 16'    | SAE      | Yellow |
| 77682S32 | 32'    | SAE      | Yellow |
| 76683S16 | 16'    | SAE      | Red    |
| 76683S32 | 32'    | SAE      | Red    |
| 77679S16 | 16'    | SAE      | Blue   |
| 77679S32 | 32'    | SAE      | Blue   |
| 77680S16 | 16'    | SAE      | Green  |
| 77680S32 | 32'    | SAE      | Green  |
| 77678S16 | 16'    | SAE      | Black  |
| 77678S32 | 32'    | SAE      | Black  |

#### Inflation/Lift Hoses

Lift hose shown here with inline gauge (not included)



Inflation / Lift Hose. Custom fitted with gauges, dump valves, over inflation relief valves, etc. (please specify requirements).

Standard inclusions:  
polypropylene braided sheathing with aluminum alloy attachment carabineers, nickel plated, brass 1/4" quick-connect/ disconnect coupling and nipple with stainless steel bearings for long service life. Solid machined stainless steel couplers available on request.

\*Custom fittings and gauges extra (please call for price)

| Part# | Length | I.D.  | Weight |
|-------|--------|-------|--------|
| 60957 | 16'    | 5/16" | 2 lbs  |
| 60958 | 32'    | 5/16" | 4 lbs  |